

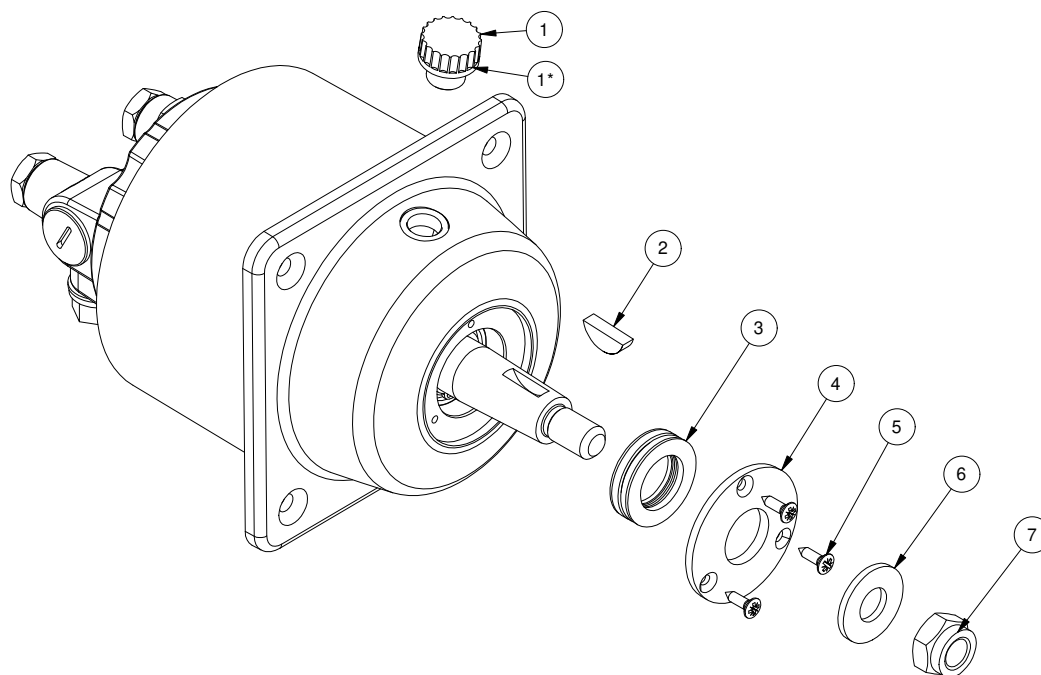
**72061**

**Helm pump, hydraulic steering 26cm<sup>3</sup>  
with flange**

**Spare parts (valid from 2023-02-17)**



**SLEIPNER**



#	Quantity	Name	Item Code	Description
1	1.00	Ventilated refill plug for helm pumps (type 1)	74017	Ventilated refill plug for helm pumps with 26/35/43cm³
1*	1.00	Non-ventilated refill plug for hel pumps (type 2)	74017T	Non-ventilated refill plug for helm pumps with 26,35/43cm³ volume
2	1.00	Key for helm pump	74252	Key for helm pump 5 x 19mm, stainless
3	1.00	Quad seal for helm pump	75008	Quad seal kit for helm pump
4	1.00	Support ring	75012	Support ring for capsule
5	3.00	Screw		M3,5 x 13
6	1.00	Washer		Ø28 x 12,5mm T2,5
7	1.00	Lock nut		DIN 985 - M12x1,75

(1\*) If you need Non-ventiled refill plug for helm pump than order this product.

## Spare part kits

#	Description	Description 2
75008	Quad seal kit for helm pump	72061,62,63,67,68,69,81,82,83,85,86 -74087B-76315

The installer alone has responsibility for the installation of the spare parts. Side-Power only warranty the spare parts supplied only.

The information given in the document was correct at the time it was published. However, Sleipner Motor AS can not accept liability for any inaccuracies or omissions it may contain. Continuous product improvement may change the product specifications without notice. Therefore, Sleipner Motor AS can not accept liability for any possible differences between product and document.