

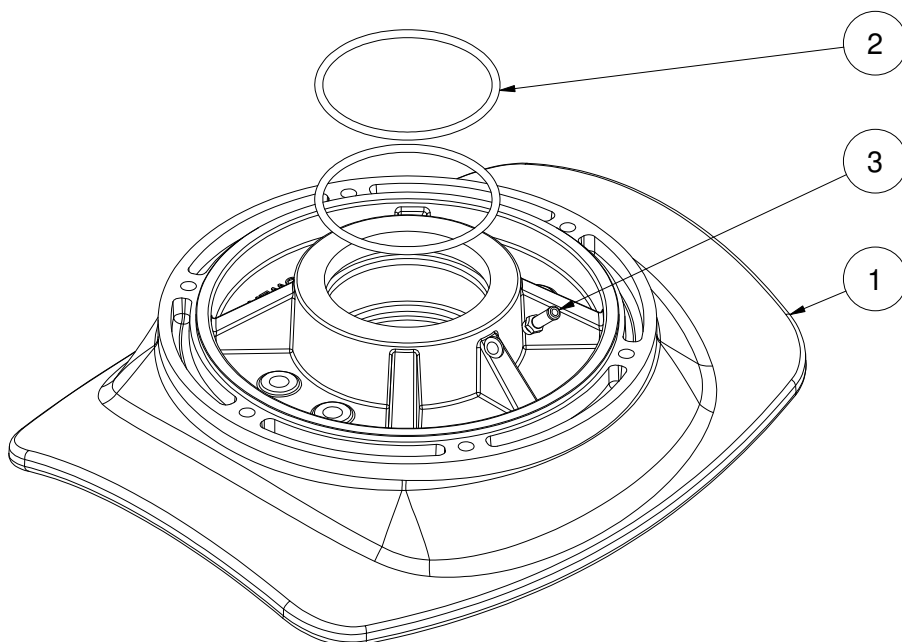
**100 0502**

## **Motor bracket SH1400, lower part**

**Spare parts (valid from 2023-01-17)**



**SLEIPNER**



#	Quantity	Name	Item Code	Description
1	1.00	Flange	100 0500	Bracket low, machined SH1400
2	2.00	O-ring		DIN 3771 - 112 x 5,3 - NBR
3	1.00	Oil nipple		Oil nipple

The installer alone has responsibility for the installation of the spare parts. Side-Power only warranty the spare parts supplied only.

The information given in the document was correct at the time it was published. However, Sleipner Motor AS can not accept liability for any inaccuracies or omissions it may contain. Continuous product improvement may change the product specifications without notice. Therefore, Sleipner Motor AS can not accept liability for any possible differences between product and document.