

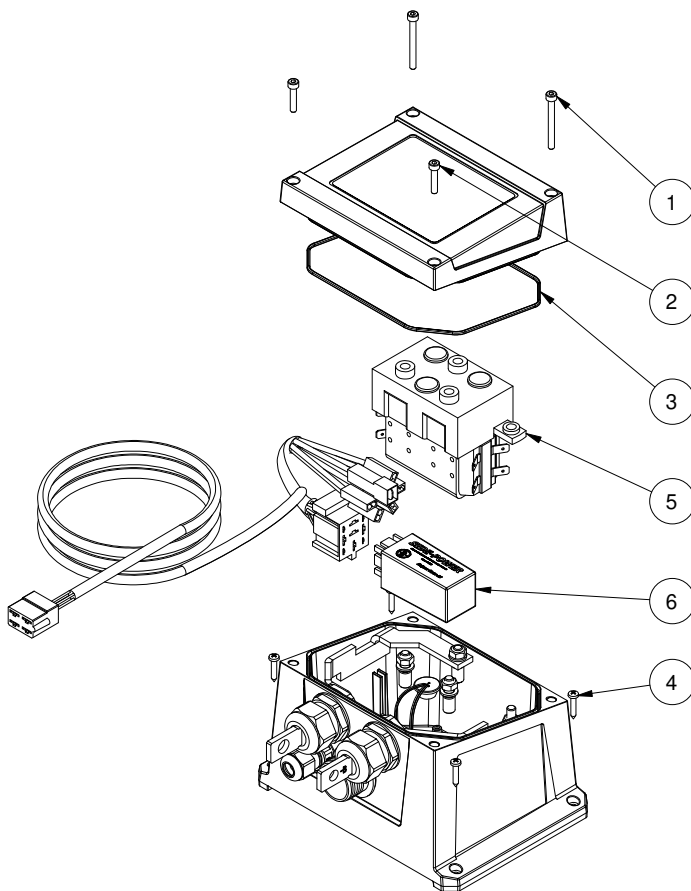
CONT-SX50-12V

Controller SX50/140 12V

Spare parts (valid from 2023-05-25)



SLEIPNER



#	Quantity	Name	Item Code	Description
1	2.00	Bolt		DIN 912 - M4 x 40
2	2.00	Bolt		DIN 912 - M4 x 20
3	1.00	Seal	SM166663	Enclosure A seal
4	4.00	Screw		DIN7981 - 3,5 x 19 A2
5	1.00	Content Controller	SM-136548	Content Controller SX50/DC88
6	1.00	Delay relay	6 1232 I	Electronic Interface for thruster motor control

The installer alone has responsibility for the installation of the spare parts. Side-Power only warranty the spare parts supplied only.

The information given in the document was correct at the time it was published. However, Sleipner Motor AS can not accept liability for any inaccuracies or omissions it may contain. Continuous product improvement may change the product specifications without notice. Therefore, Sleipner Motor AS can not accept liability for any possible differences between product and document.