

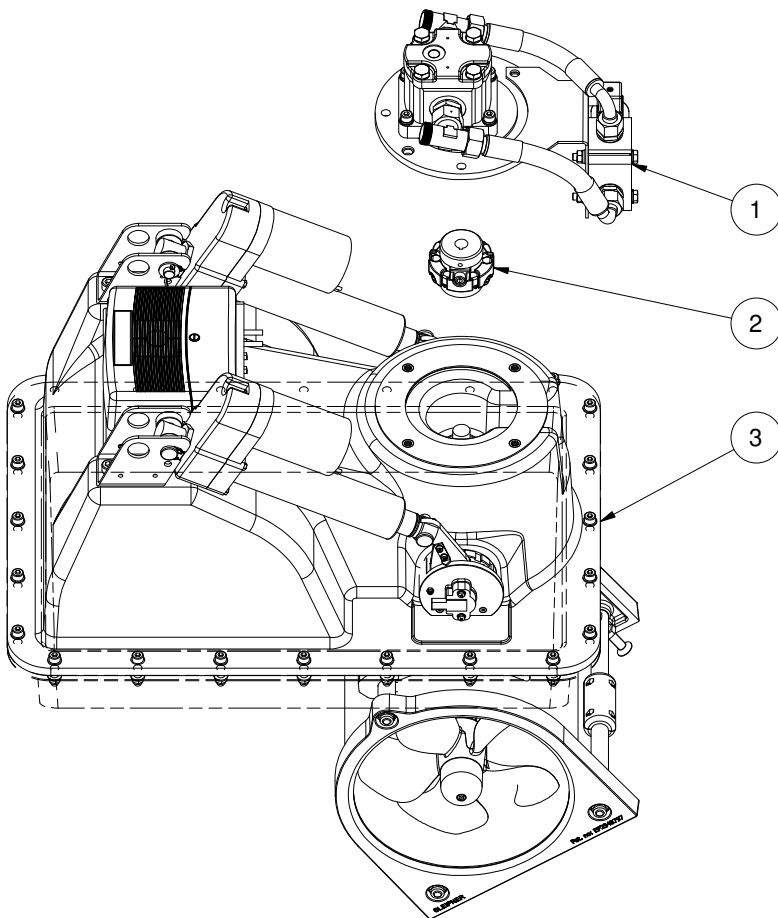
**SRHP240-G11-24V**

**SRHP240 retract thruster hydraulic G11**

**Spare parts (valid from 2023-07-07)**



**SLEIPNER**



| # | Quantity | Name                         | Item Code        | Description                    |
|---|----------|------------------------------|------------------|--------------------------------|
| 1 | 1.00     | Hydraulic motor mounted      | 102110UL5        | Hyd. motor mont.SRH240-11ccm U |
| 2 | 1.00     | Centa Flexi Coupling Ø15 Ø20 | 10 50CFB76-15-20 | Centa CFB 76 machined Ø15-Ø20  |
| 3 | 1.00     | Retract mechanical           | 13 0654          | Retract mechanical SRH240      |

The installer alone has responsibility for the installation of the spare parts. Side-Power only warranty the spare parts supplied only.

The information given in the document was correct at the time it was published. However, Sleipner Motor AS can not accept liability for any inaccuracies or omissions it may contain. Continuous product improvement may change the product specifications without notice. Therefore, Sleipner Motor AS can not accept liability for any possible differences between product and document.