

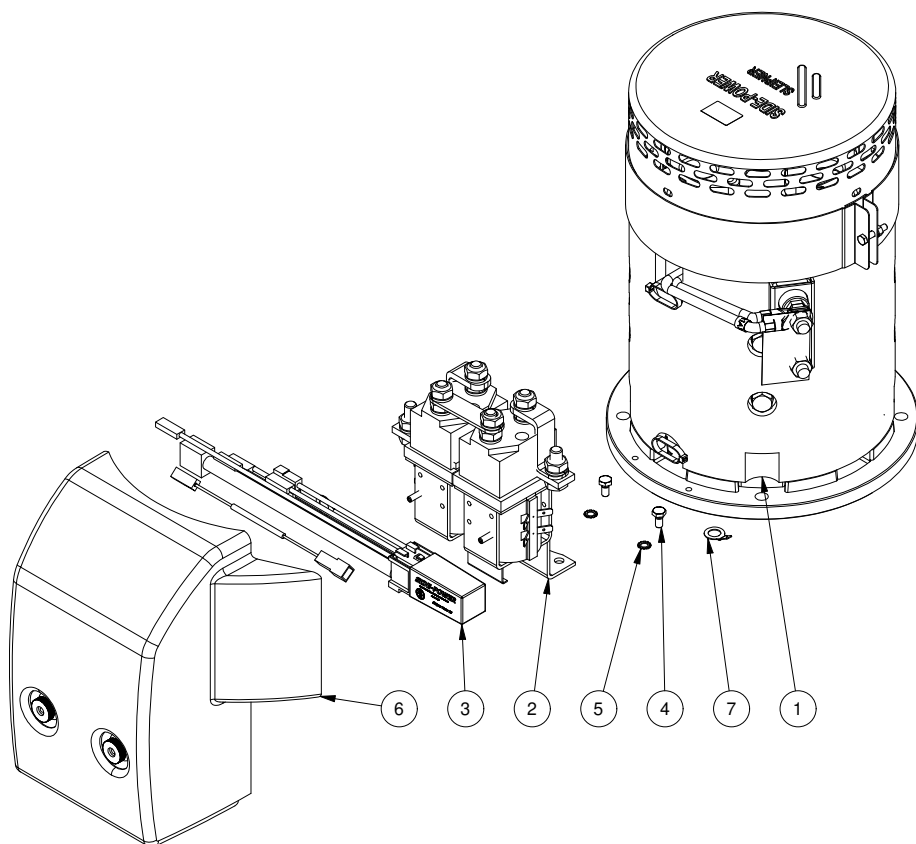
20 0101 48

Electric motor SE300/SP285 48V

Spare parts (valid from 2022-08-26)



SLEIPNER



#	Quantity	Name	Item Code	Description
1	1.00	Electric motor		
2	1.00	Solenoid replacement	1013702	Solenoid SE150/170/210/250/300
3	1.00	Controller	SM159970	Controller SE300 24V
4	2.00	Bolt		DIN 933 - M6 x 12
5	2.00	Lock washer		DIN 6798 - A 6,4
6	1.00	Solenoid cover kit	SM168576	Solenoid cover kit SE150/170/210/250/300
7	1.00	Cable lug		Cable lug
8*	1.00	Brushes for motor (kit)		
9*	1.00	Brushes spring for motor (kit)		
10*	1.00	Temp switch		

(8*) Please provide thruster serial # when ordering brushes for motor.

(9*) Please provide thruster serial # when ordering brushes spring for motor.

(10*) Please provide thruster serial # when ordering temp switch.

The installer alone has responsibility for the installation of the spare parts. Side-Power only warranty the spare parts supplied only.

The information given in the document was correct at the time it was published. However, Sleipner Motor AS can not accept liability for any inaccuracies or omissions it may contain. Continuous product improvement may change the product specifications without notice. Therefore, Sleipner Motor AS can not accept liability for any possible differences between product and document.