

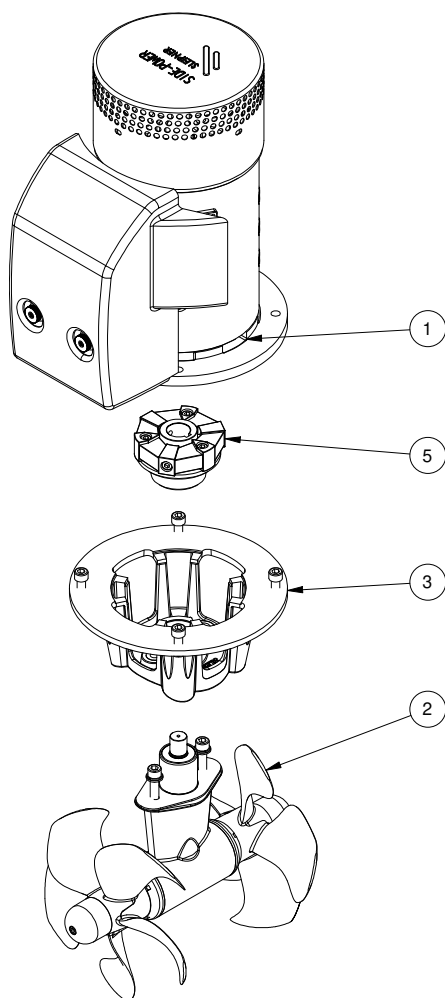
SE210/250TC

SE210 tunnel bow/stern thruster 24V

Spare parts (valid from 2022-08-19)



SLEIPNER



| # | Quantity | Name | Item Code | Description |
|---|----------|-------------------|------------|--------------------------------|
| 1 | 1.00 | Electric motor | 13 0101 24 | Electric motor SP200/SE210 24V |
| 2 | 1.00 | Gearleg | 13 0603 | Gearleg SE170/210 |
| 3 | 1.00 | Bracket | 13 0501 | Motor bracket SE210 |
| 5 | 1.00 | Flexible coupling | 20 1450 TC | Flexible coupling Ø28xØ20 |

The installer alone has responsibility for the installation of the spare parts. Side-Power only warranty the spare parts supplied only.

The information given in the document was correct at the time it was published. However, Sleipner Motor AS can not accept liability for any inaccuracies or omissions it may contain. Continuous product improvement may change the product specifications without notice. Therefore, Sleipner Motor AS can not accept liability for any possible differences between product and document.