

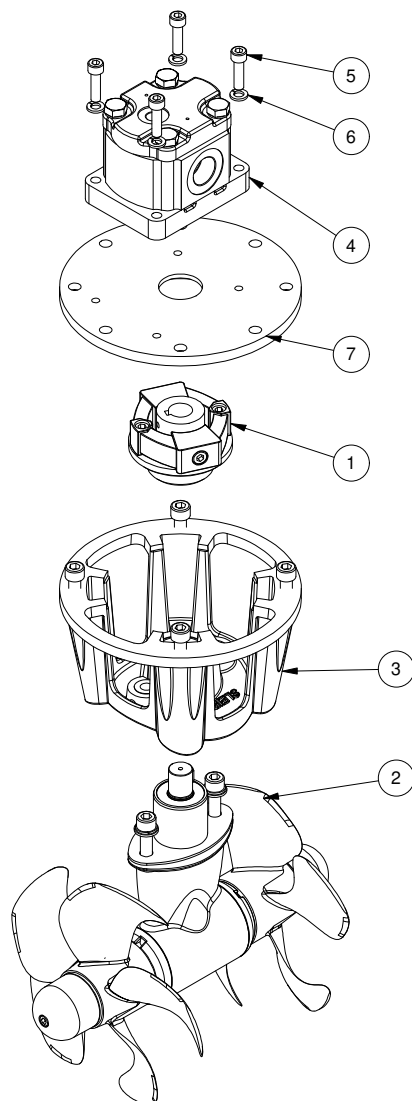
**SH160/215T-U10**

**SH160 tunnel thruster hydraulic Ø215  
U10**

**Spare parts (valid from 2022-09-01)**



**SLEIPNER**



#	Quantity	Name	Item Code	Description
1	1.00	Flexible coupling	10 1450HYD	Flexible coupling kit for SH240
2	1.00	Gearleg	10 0600	Gearleg SE120/150
3	1.00	Bracket for motor	9 0500	Motor bracket SE120/150
4	1.00	Hydraulic motor	72100/U-10	Hydraulic motor 10cm <sup>3</sup> gear motor
5	4.00	Bolt		DIN 912 - M8 x 30
6	4.00	Washer		DIN 127 - A 8
7	1.00	Adapter plate	10 21301	Adapter plate SH100/240

The installer alone has responsibility for the installation of the spare parts. Side-Power only warranty the spare parts supplied only.

The information given in the document was correct at the time it was published. However, Sleipner Motor AS can not accept liability for any inaccuracies or omissions it may contain. Continuous product improvement may change the product specifications without notice. Therefore, Sleipner Motor AS can not accept liability for any possible differences between product and document.