

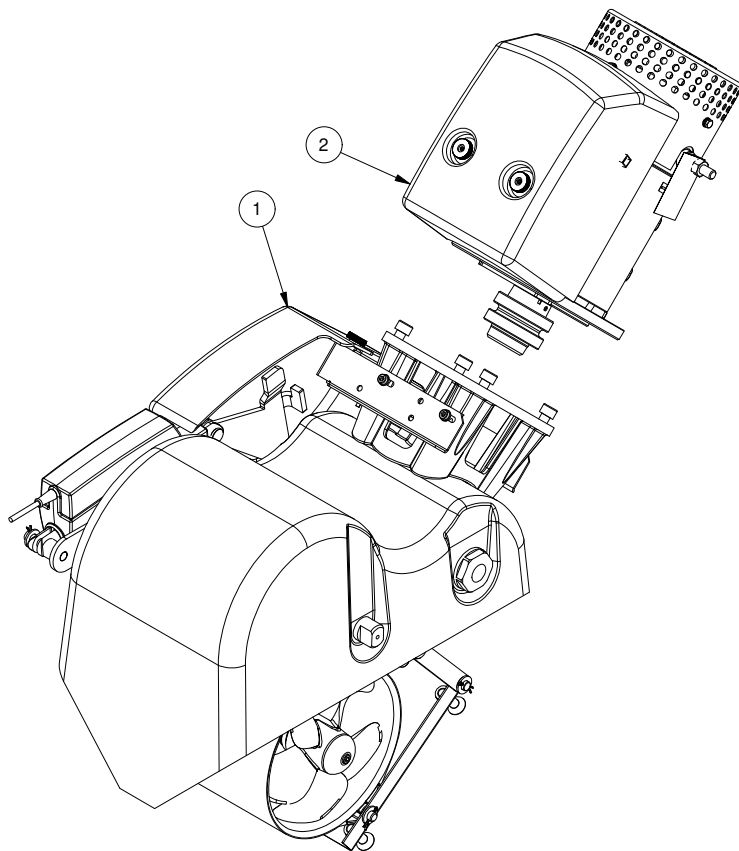
SR100/185T-12V

SR100 retract bow/stern thruster 12V

Spare parts (valid from 2023-06-01)



SLEIPNER



#	Quantity	Name	Item Code	Description
1	1.00	Mechanical drive unit	8 0650-12	Retract mechanical SR80/100-12v
2	1.00	Electric motor (w/flexible coupling)	8 0105 12	Electric motor SR100 12V

The installer alone has responsibility for the installation of the spare parts. Side-Power only warranty the spare parts supplied only.

The information given in the document was correct at the time it was published. However, Sleipner Motor AS can not accept liability for any inaccuracies or omissions it may contain. Continuous product improvement may change the product specifications without notice. Therefore, Sleipner Motor AS can not accept liability for any possible differences between product and document.