

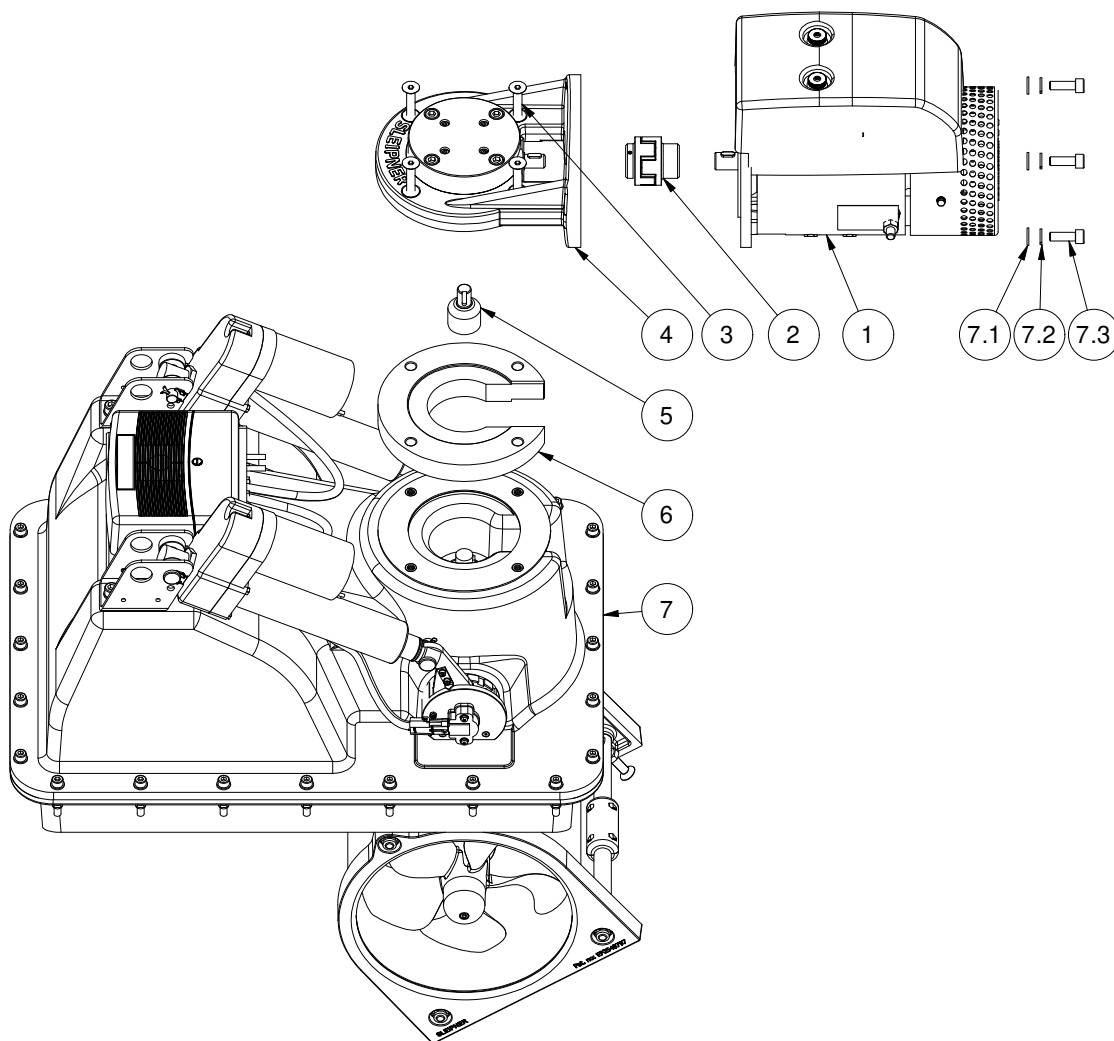
SRL130/250T-24V

SRL130 retract bow/stern thruster 24V

Spare parts (valid from 2022-12-16)



SLEIPNER



| # | Quantity | Name | Item Code | Description |
|-----|----------|-------------------------------|-----------|----------------------------------|
| 1 | 1.00 | Electric motor | 9 0104 24 | Electric motor SEP/SR/SRP130 24V |
| 2 | 1.00 | Flexible coupling | 141320 | Flexible coupling Rotex Ø16xØ20 |
| 3 | 4.00 | Bolt | | DIN 7991 - M10x70 A4 |
| 4 | 1.00 | Bevel gear | 140270 | Bevel gear SRL thrusters |
| 5 | 1.00 | Connection part | 140922 | Connection part SRL170 |
| 6 | 1.00 | Flange adapter for bevel gear | 140923 | Flange angle adapter SRL170 |
| 7 | 1.00 | Retract Mechanical | 13 0652 | Retract mechanical SRV130/24V |
| 7.1 | 4.00 | Washer | | DIN 125 - A 10,5 |
| 7.2 | 8.00 | Lock washer | | DIN 127 - A 10 |
| 7.3 | 4.00 | Bolt | | DIN 912 - M10 x 30 |

The installer alone has responsibility for the installation of the spare parts. Side-Power only warranty the spare parts supplied only.

The information given in the document was correct at the time it was published. However, Sleipner Motor AS can not accept liability for any inaccuracies or omissions it may contain. Continuous product improvement may change the product specifications without notice. Therefore, Sleipner Motor AS can not accept liability for any possible differences between product and document.