

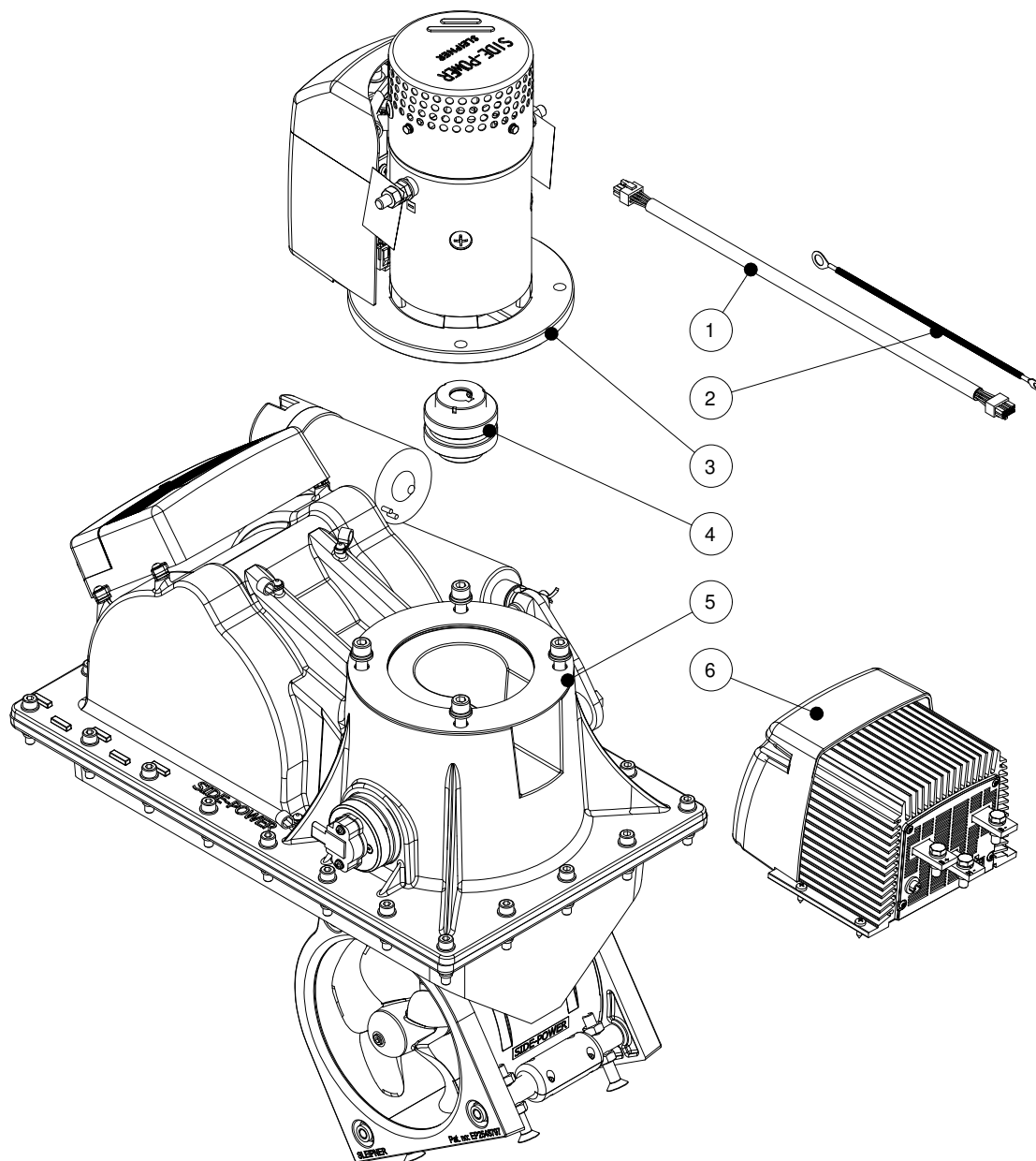
**SRVP80/185T-24V**

**SRVP80 PRO™ retract bow/stern thruster**  
**24V**

**Spare parts (valid from 2025-02-04)**



**SLEIPNER**



#	Quantity	Name	Item Code	Description
1	1.00	Motor cable	150057	Motor cable 410mm length
2	1.00	Power cable-red L=800mm	150063	Power Cable SRV Red
3	1.00	Electric motor compl SRV/L/P80 24V	6 0110 24	Electric motor 24V
4	1.00	Flexible coupling Ø20xØ16	7 1462	Flexible coupling Ø20-Ø16
5	1.00	Retract Mechanical	8 0651 24	Retract mechanical SRV80/100 24V
6	1.00	Power control unit, variable speed controller for PRO™ thrusters	PPC520	PPC520 PRO™ power control unit

## Spare part kits

#	Description	Description 2
6 2199	Retract tunnel SR80/100 Ø185mm, complete set	
SM-131069	Adapter water proof SRV	For SRV sensor
SM158812	Lower joint kit Retract 185mm	
SM167115	Tunnel kit for retract thruster SRV80/100	
SM167585	Actuator kit 24 v Retract 185-250mm	
SM167587	Grommet kit Retract 185-250mm	4 pcs.
SM173212	Upper drive shaft kit	retract V/L Ø185mm
SM182424	Seal kit horizontal shaft Retract Ø185mm	
6 1180	Anode, zinc 4HP up to 1999	
6 2075	Horizontal shaft SRV 185mm	
6 2076	Vertical shaft SRV 185mm	
6 2142	Retract ring support kit 185mm	
7 1190 A	Anode, aluminium SE60/80/100	SP55/75/95

The installer alone has responsibility for the installation of the spare parts. Side-Power only warranty the spare parts supplied only.

The information given in the document was correct at the time it was published. However, Sleipner Motor AS can not accept liability for any inaccuracies or omissions it may contain. Continuous product improvement may change the product specifications without notice. Therefore, Sleipner Motor AS can not accept liability for any possible differences between product and document.