

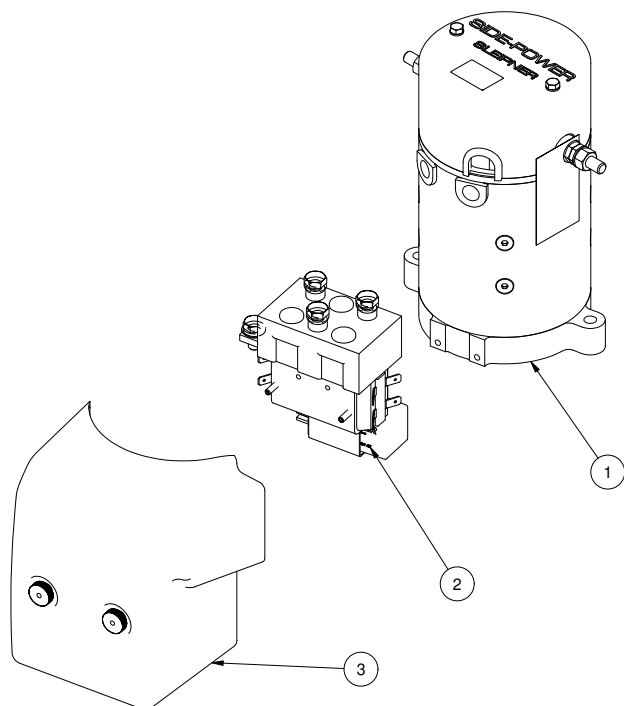
2 0107 12

Electric motor SEP30 12V

Spare parts (valid from 2022-06-07)



SLEIPNER



#	Quantity	Name	Item Code	Description
1	1.00	Electric motor		
2	1.00	Solenoid kit	3 0131 12	Solenoid kit SE40 + SP40 12V
3	1.00	Solenoid cover kit for SE40	SM168203	Solenoid cover kit SE40
4	1.00	Brushes for motor (kit)		--
5	1.00	Brushes spring for motor (kit)		--
6	1.00	Temp switch		--

(*4) Please provide thruster serial # when ordering brushes for motor (kit)

(*5) Please provide thruster serial # when ordering brushes spring for motor (kit)

(*6) Please provide thruster serial # when ordering temp switch

The installer alone has responsibility for the installation of the spare parts. Side-Power only warranty the spare parts supplied only.

The information given in the document was correct at the time it was published. However, Sleipner Motor AS can not accept liability for any inaccuracies or omissions it may contain. Continuous product improvement may change the product specifications without notice. Therefore, Sleipner Motor AS can not accept liability for any possible differences between product and document.