

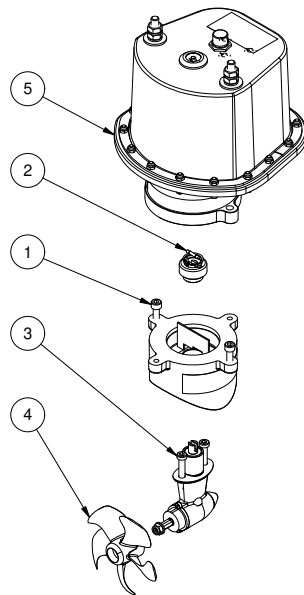
SE40/125S2-12IP

SE40 IP tunnel bow/stern thruster 12V

Spare parts (valid from 2022-04-26)



SLEIPNER



#	Quantity	Name	Item Code	Description
1	1.00	Bracket	SM-126592	Motor bracket SE30/40S2, galvanic isolation
2	1.00	Flexible coupling	SM175029	Flexible coupling SE20,25,30 & 40
3/4	1.00	Gearleg	3 0601	Gearleg SE30/40
5	1.00	Electric motor	3 0104 12	Electric motor SE40 12V IP

The installer alone has responsibility for the installation of the spare parts. Side-Power only warranty the spare parts supplied only.

The information given in the document was correct at the time it was published. However, Sleipner Motor AS can not accept liability for any inaccuracies or omissions it may contain. Continuous product improvement may change the product specifications without notice. Therefore, Sleipner Motor AS can not accept liability for any possible differences between product and document.