

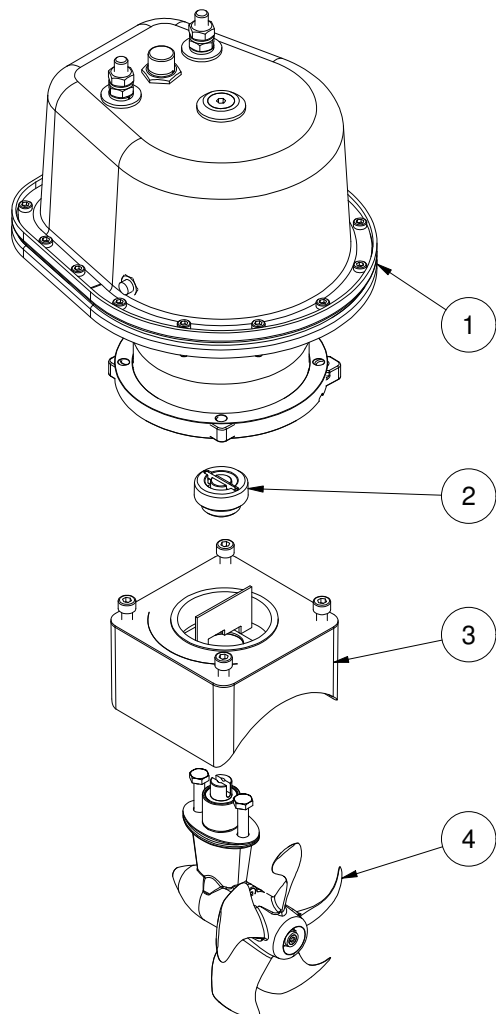
**SE50/140S-24IP**

**SE50 IP tunnel bow thruster 24V**

**Spare parts (valid from 2023-11-09)**



**SLEIPNER**



#	Quantity	Name	Item Code	Description
1	1.00	Electric motor 24V for IP thruster		Electric motor 24V for IP thruster
2	1.00	Flexible coupling kit	SM-137073	Flexible coupling SE50/60
3	1.00	Bracket for motor	3 0502	Motor bracket SE50
4	1.00	Gearleg	5 0600	Gearleg SE50

The installer alone has responsibility for the installation of the spare parts. Side-Power only warranty the spare parts supplied only.

The information given in the document was correct at the time it was published. However, Sleipner Motor AS can not accept liability for any inaccuracies or omissions it may contain. Continuous product improvement may change the product specifications without notice. Therefore, Sleipner Motor AS can not accept liability for any possible differences between product and document.