

**SEP40/125S2**

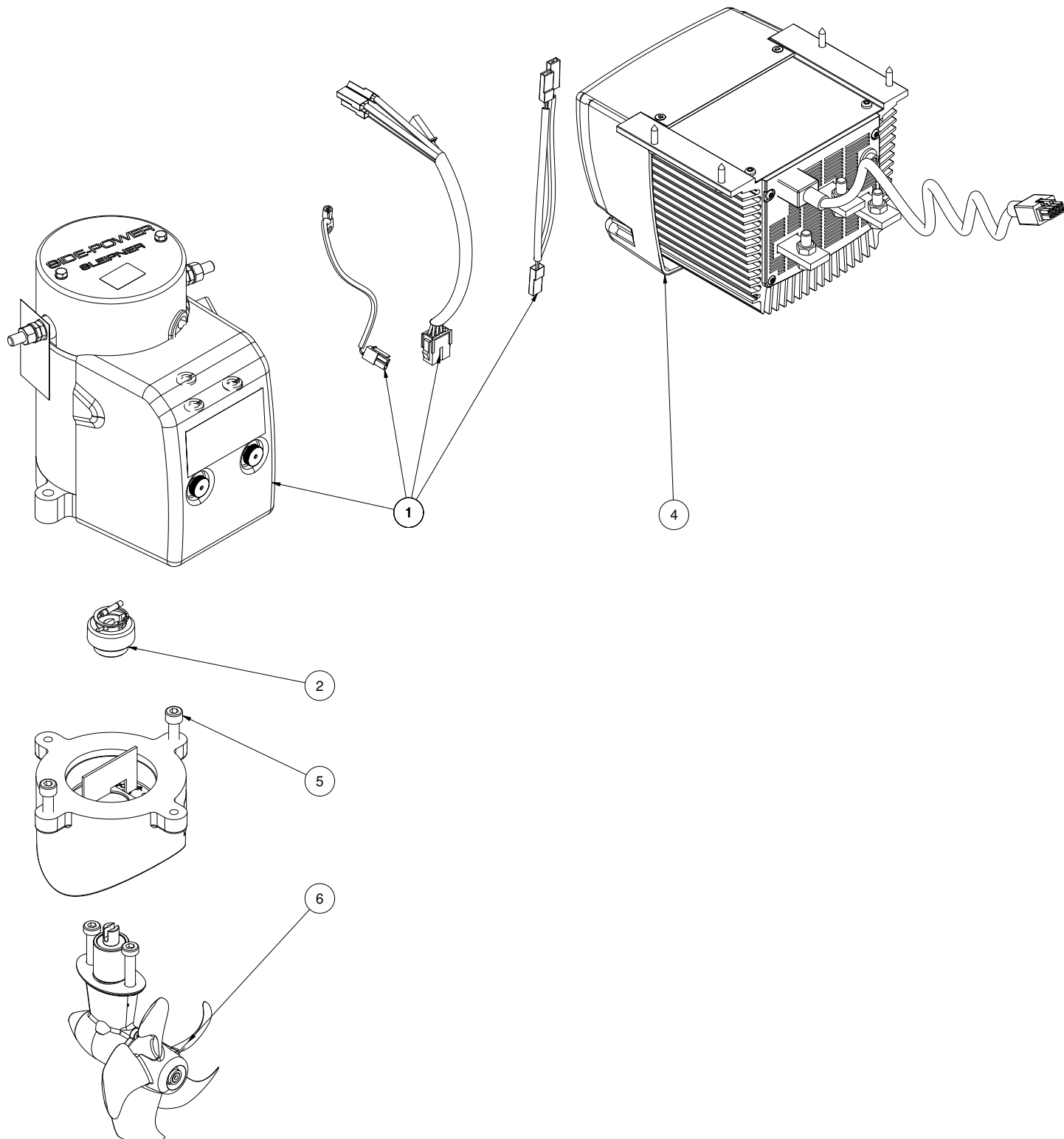
**SEP40 PRO™ tunnel bow/stern thruster**

**12V**

**Spare parts (valid from 2022-03-29)**



**SLEIPNER**



#	Quantity	Name	Item Code	Description
1	1.00	Electric motor	3 0105 12	Electric motor SEP40 12V
2	1.00	Flexible coupling	SM175029	Flexible coupling SE20,25,30 & 40
4	1.00	PPC 520	PPC520	PPC520 PRO™ power control unit
5	1.00	Bracket	SM-126592	Motor bracket SE30/40S2, galvanic isolation
6	1.00	Gearleg	3 0601	Gearleg SE30/40

The installer alone has responsibility for the installation of the spare parts. Side-Power only warranty the spare parts supplied only.

The information given in the document was correct at the time it was published. However, Sleipner Motor AS can not accept liability for any inaccuracies or omissions it may contain. Continuous product improvement may change the product specifications without notice. Therefore, Sleipner Motor AS can not accept liability for any possible differences between product and document.