

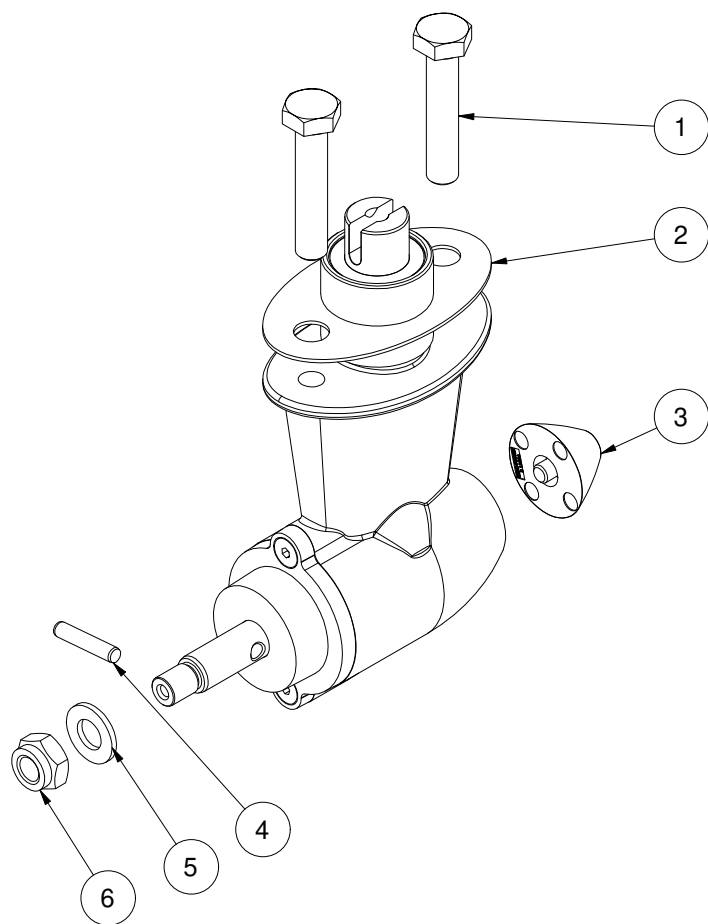
**5 0600-U**

**Gearleg SE50 w/out propeller**

**Spare parts (valid from 2023-08-30)**



**SLEIPNER**



#	Quantity	Name	Item Code	Description
1	2.00	Bolt		DIN 931-1 - M8 x 40
2	1.00	Gasket for gearleg SE50	141261	Gasket for gearleg/tunnel SE50
3	1.00	Anode Kit	3 1180 A	Anode, aluminium SE20/25/30/40/50
4	1.00	Drive pin for propeller		ISO 8734 - 4 x 20 - A
5	1.00	Flat washer		DIN 125 - A 8,4
6	1.00	Lock nut		DIN 985 - M8x1,25

The installer alone has responsibility for the installation of the spare parts. Side-Power only warranty the spare parts supplied only.

The information given in the document was correct at the time it was published. However, Sleipner Motor AS can not accept liability for any inaccuracies or omissions it may contain. Continuous product improvement may change the product specifications without notice. Therefore, Sleipner Motor AS can not accept liability for any possible differences between product and document.