

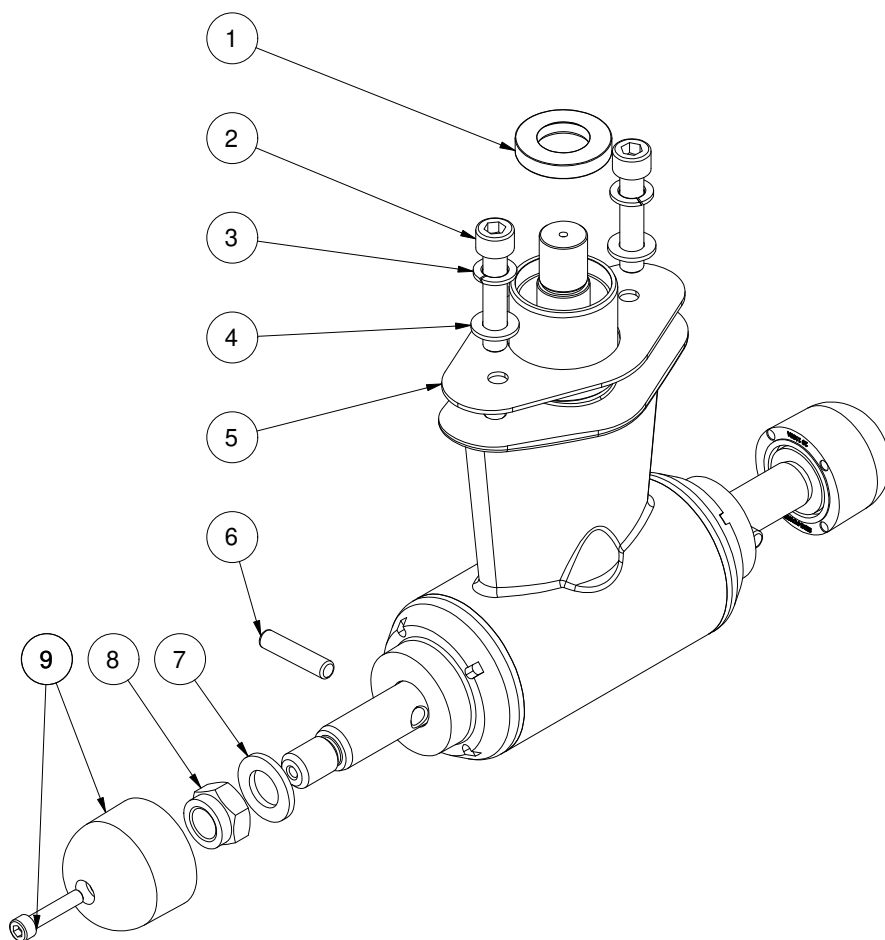
13 0603-U

Gearleg SE170/210 w/out propeller

Spare parts (valid from 2023-01-16)



SLEIPNER



#	Quantity	Name	Item Code	Description
1	1.00	Shaft seal		DIN 3760 - AS - 22 x 40 x 7 - NBR - Carbon Steel
2	2.00	Bolt		DIN 912 - M10 x 50
3	2.00	Lock washer		DIN 128 - A10
4	2.00	Washer		DIN 125 - A 10,5
5	1.00	Gasket	10 1312	Gasket for gearleg/tunnel SE130/170/210
6	2.00	Drive pin		ISO 8734 - 8 x 37
7	2.00	Washer for propeller		DIN 125 - A 17
8	2.00	Nut for propeller		DIN 985 - M16x2
9	2.00	Anode,aluminium set	20 1180 A	Anode kit, aluminium aloy (Al-Zn-In)

The installer alone has responsibility for the installation of the spare parts. Side-Power only warranty the spare parts supplied only.

The information given in the document was correct at the time it was published. However, Sleipner Motor AS can not accept liability for any inaccuracies or omissions it may contain. Continuous product improvement may change the product specifications without notice. Therefore, Sleipner Motor AS can not accept liability for any possible differences between product and document.